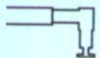
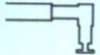
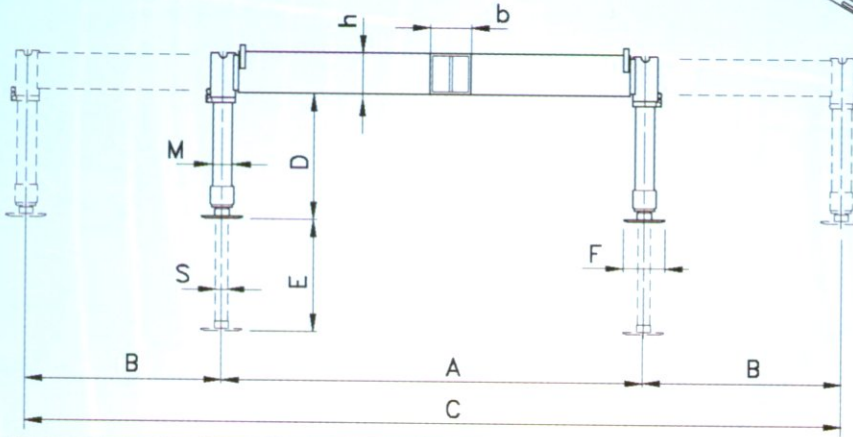
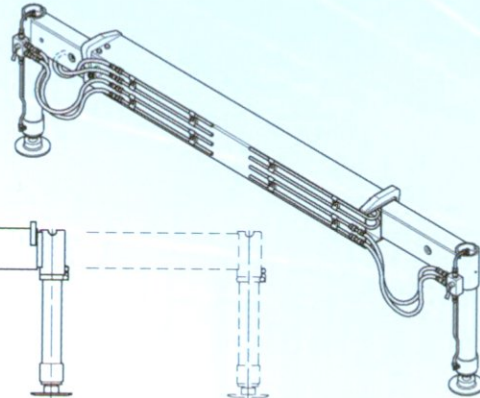


MAXISTAB

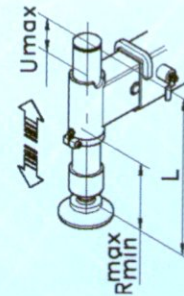
Extendable with side-by-side rods
Ausziehbar mit Seite-an-Seite Stangen

EMA  Manual - Manuell
EHA  Hydraulic - Hydraulisch

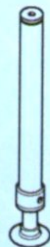


CRANES KRÄNE Ton, m	MODEL MODELL	FEATURES - MERKMALE											WEIGHT GEWICHT Kg	
		A	B	C	h x b	D = R max.	R min.	U max.	E	F	M	S		L
10 - 25	1 EMA K	2100	1150	4400	200 x 200	510	210	300	450	160	85	60	710	240
	1 EMA/L K					610		400	550				810	245
	1 EHA K					510		300	450				710	275
	1 EHA/L K					610		400	550				810	280
18 - 35	2 EMA/S K	2100	1300	4700	200 x 235	460	210	250	400	200	95	60	660	330
	2 EMA K					610		400	550				810	340
	2 EMA/L K					710		500	650				910	345
	2 EHA/S K					460		250	400				660	370
	2 EHA K					610		400	550				810	380
	2 EHA/L K					710		500	650				910	385
30 - 45	3 EHA/S K	2200	1400	5000	250 x 235	480	240	220	400	200	95	60	710	420
	3 EHA K					630		370	550				860	430
	3 EHA/L K					730		470	650				960	435

K: Cylinders adjustable in height by patented locking system
Hochverstellbare Zylinder nach Belieben durch Patentsperrsystem



..../L... long cylinder
langer Zylinder



..../S... short cylinder
kurzer Zylinder

